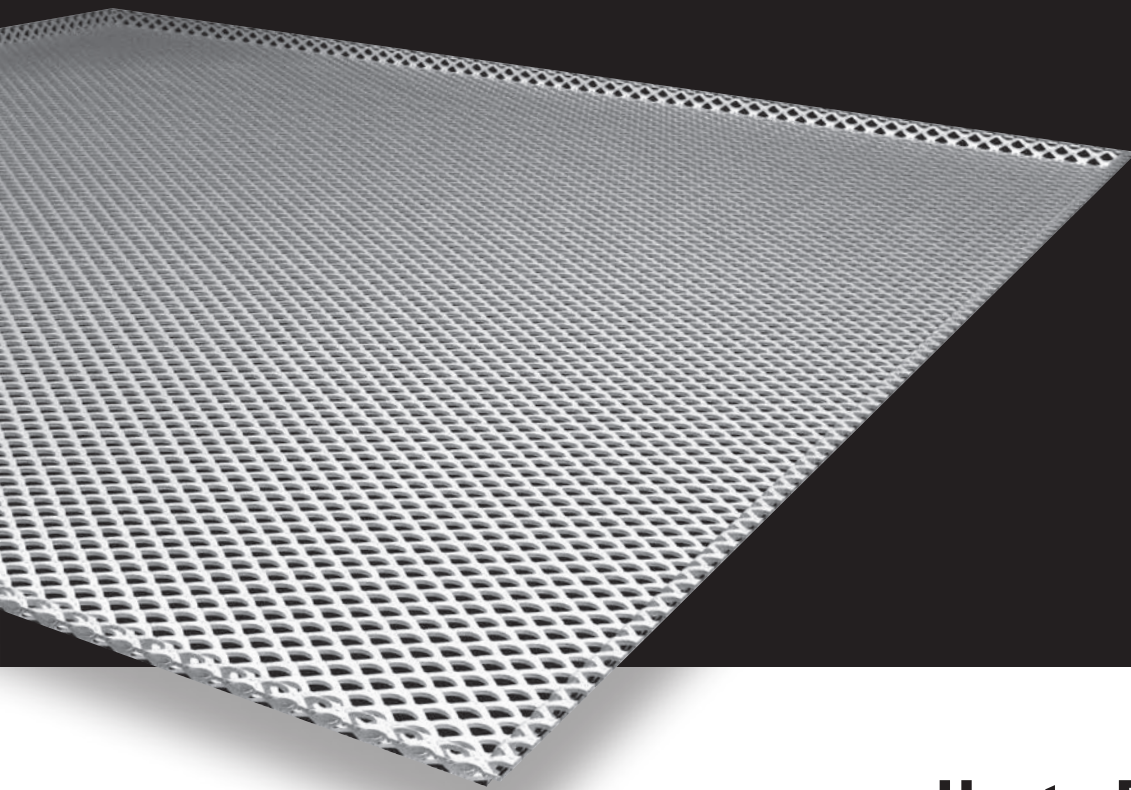


Stretch Metal Hook-On Safety Loop Exterior

Stretch Metal from Hunter Douglas is a highly versatile designer material giving extra **visual effects** to ceilings. It is very easy to **customise ceilings** by varying the types of mesh, their arrangement, the lighting and the **colour**.



HunterDouglas 
Architectural

Hook-On Safety Loop Exterior

PLANKS

The Stretch Metal Hook-On Safety Loop system is designed for bigger surfaces without concessions to accessibility. The system executed in aluminium and with exterior grade powder coating is suitable for use in exterior applications. The locking plates prevent unauthorised removal of the panels and at the same time lock the panels in place to provide wind load resistance.

DEMOUNTABILITY AND ACCESS

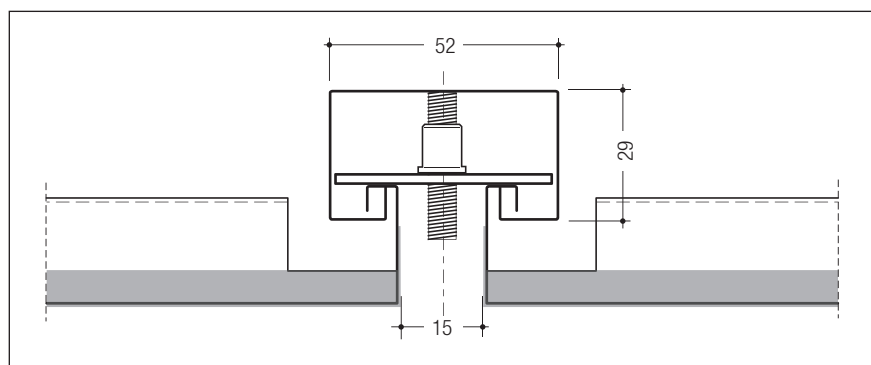
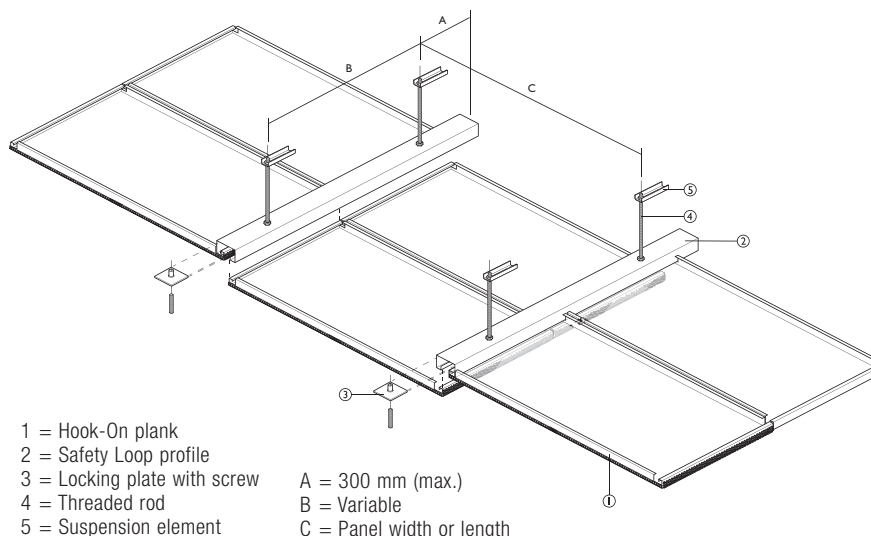
Each panel is individually demountable by unscrewing the locking plate with an hexagonal Allen key through the 15 mm joint between the panels. Once the panels are free they can be easily lifted from the hook-on profile.

WIND LOADS AND ENVIRONMENT*

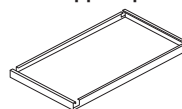
The wind load on an exterior ceiling depends on factors like:

- location of the building
- surrounding environment
- height
- situation on the building
- type of ceiling.

In addition, there may be other factors that influence the performance like (industrial) pollution, salinity (coastal areas) or humidity (nearby watery environments).



Version-II: Stretch Metal with welded support profile



OVERVIEW AVAILABLE EXECUTIONS

Mesh Type		% Open	Version-II, with reinforcement
LS6	Type 1	40	400 x 2000 mm
LD6		40	400 x 2000 mm
LS8		54	400 x 2000 mm
LS10		57	600 x 2400 mm
LS12		66	600 x 2400 mm
LS16	Type 2	46	600 x 2400 mm
New York		48	680 x 2800 mm
Dubai		36	750 x 2800 mm
Moscow		55	728 x 2800 mm
Rotterdam		50	740 x 2800 mm

MATERIAL REQUIREMENT PER M²

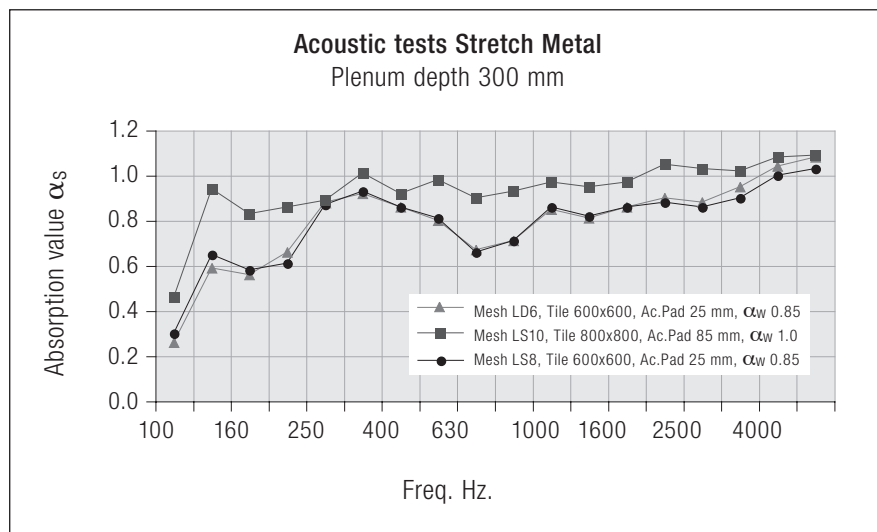
		AI
Components	Unit	Version-II, max 600 x 2800 mm
Stretch Metal Hook-On	pcs	0.69
Locking plate	pcs	0.69
Safety Loop profile	lm	0.42
Safety Loop profile splice	pcs	0.08
Suspension	pcs	variable, depends on wind load

*Please contact your local Hunter Douglas sales office for advice on wind loads and exterior ceiling applications.

Acoustics

ACOUSTIC PERFORMANCE

Using acoustic pads on top of the Stretch Metal panels offers exceptional acoustic performance. The thickness of the pads can be chosen depending on the required acoustical values. The acoustic absorption value can reach α_w 1 with an acoustical pad of 85 mm.



Material

TRANSPARENCY

The tiles can be made from various mesh types. This results in different optical effects if the natural or artificial light comes from the plenum. It is important to realise that stretch metal meshes do have a direction. Depending on viewing direction the mesh appears more or less open. This influences light coming through the material but also the visibility of installations in the plenum. The physical transparency can also be used for smoke extraction and sprinkler operation in case of fire.

FIRE BEHAVIOUR

HunterDouglas® metal ceilings are classified incombustible, and will therefore not contribute to fires. When ceilings need to protect the structural integrity of a building, HunterDouglas® ceilings offer a wide range of practical solutions with regards to fire resistance and fire stability. Further information is available on request.

COATING

Stretch Metal tiles are all powder coated materials. Durable powder coatings for exterior use are optionally available.

COLOUR RANGE

The standard colour range consists of RAL and NCS colours, including chrome. Other special colours are available on request.

QUALITY

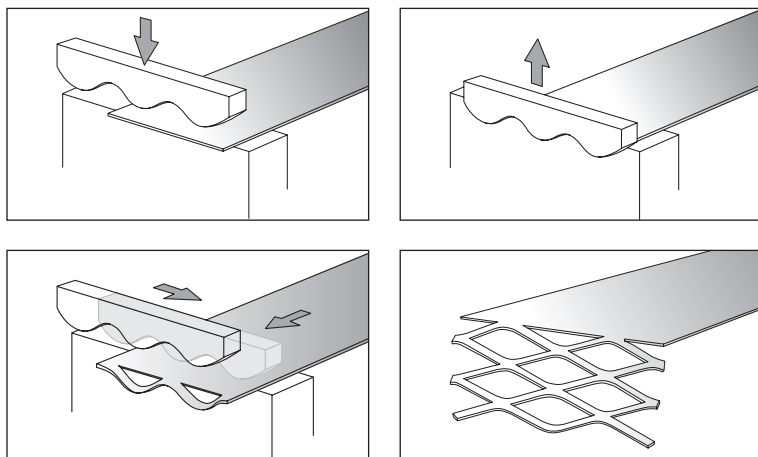
Our focus on quality ensures the highest standard of production process, material, machinery and finished product. The superior durability of Hunter Douglas products translates into lower costs during the life cycle of the product due to longer life expectancy and lower maintenance costs. Our company processes are ISO 9001 certified.

INSTALLATION

It is necessary for all versions that qualitative suspension systems are used. The systems must be stable, aligned and leveled so that they comply with the requirements of the panels. For information on installation, refer to the applicable assembly instruction leaflets.

Mesh Types Tiles & Planks

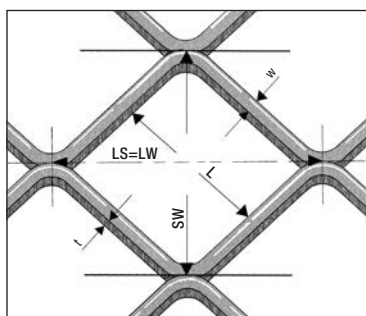
Stretch Metal consists of metal sheet with diamond or square shaped holes. The stretch metal material is made with a tool that simultaneously cuts and stretches the sheets. As a result the mesh is created without any waste of material.



MESH TYPES

Standard

The standard mesh types are a square mesh (LS) or a diamond shaped mesh (LD) with a variation in openness of the mesh. The range starts with the smallest LS6/LD6 up to LS16. All mesh types are available in steel, with types LS8 and LS12 also available in aluminium.

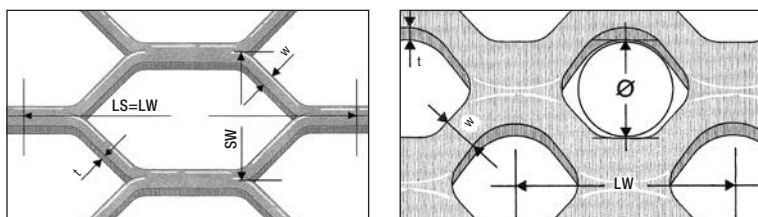


Key

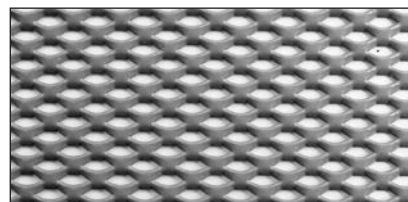
- LS = LW
- LW = Long diagonal of mesh
- SW = Short diagonal of mesh
- W = Strand width
- t = Strand Thickness
- L = Inner size

Special

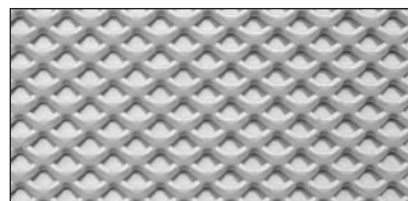
Several other mesh types are available on request, depending on technical requirements and availability. Hexagonal mesh, Round mesh and Ornamental meshes are examples of the possibilities.



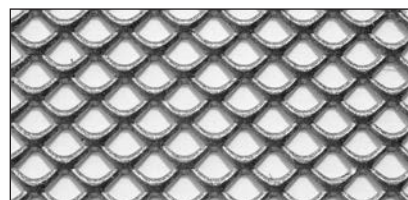
STANDARD MESH TYPES:



LD6 (Fe) open area 40%, thickness 1.7 mm
dimensions: 6 x 3.5 - 1.1 x 0.8 - 1.6 kg/m²



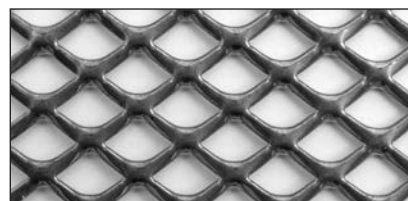
LS6 (Fe) open area 36%, thickness 1.7 mm
dimensions: 6 x 4.5 - 1.2 x 1.0 - 1.3 kg/m²



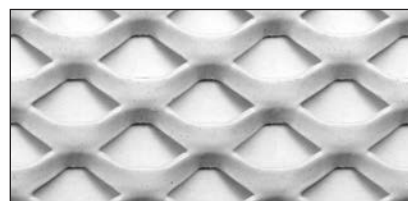
LS8 (Fe+Al) open area 54%, thickness 1.9 mm
dimensions: 8 x 6.0 - 1.2 x 1.0 - 1.7 kg/m²



LS10 (Fe) open area 57%, thickness 2.0 mm
dimensions: 10 x 7.0 - 1.5 x 1.0 - 1.3 kg/m²



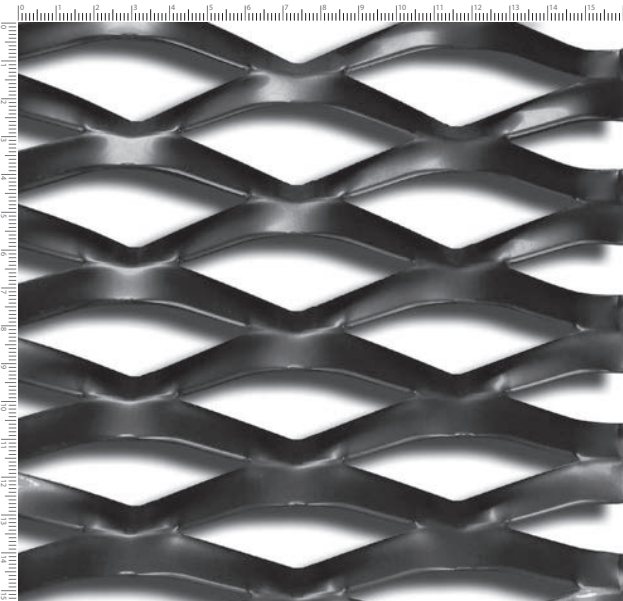
LS12 (Fe+Al) open area 66%, thickness 2.0 mm
dimensions: 12 x 9.5 - 1.6 x 1.0 - 1.7 kg/m²



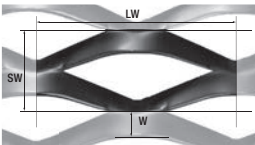
LS16 (Fe) open area 46%, thickness 2.0 mm
dimensions: 16 x 11.0 - 3.0 x 2.0 - 2.0 kg/m²

Macro Meshes Planks

NEW YORK: dimensions: 85 x 35 - 11 x 2 (Scale 1:2)

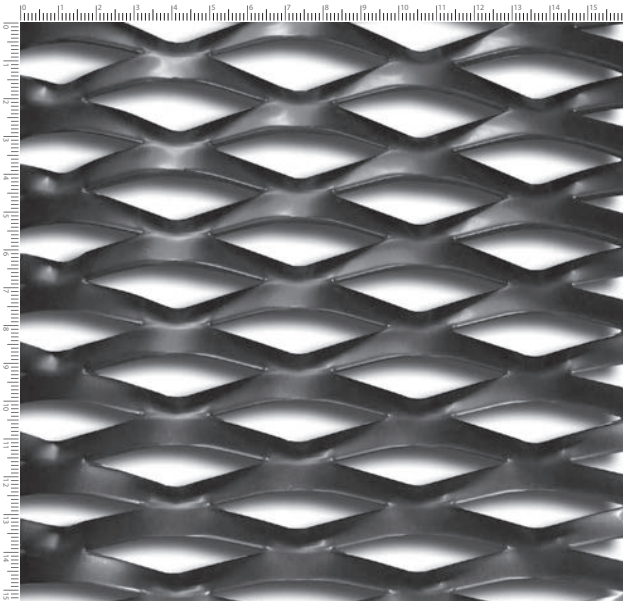


Features	Aluminium	Steel
LW mm	85	85
SW mm	35	35
W mm	11	11
t mm	2	2
Weight kg/m ²	2.6/3.4	7.8/10.2
% opening	48%	48%
Colour	RAL Anodised	Galvanised RAL

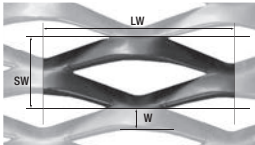


Mesh dimensions
LW = Long diagonal **W** = Width
SW = Short diagonal **t** = Thickness

DUBAI: dimensions: 62 x 23 - 8 x 1.5 (Scale 1:2)

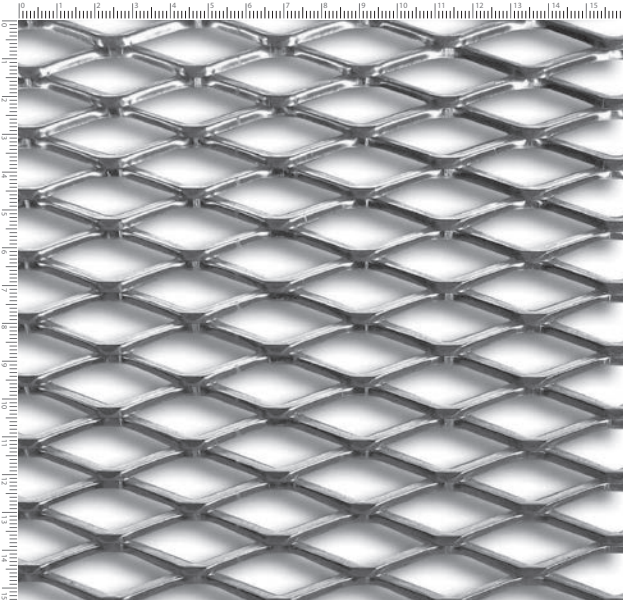


Features	Aluminium	Steel
LW mm	62	62
SW mm	23	23
W mm	8	8
t mm	1.5	1.5
Weight kg/m ²	2.7/3.6	8.2/11.2
% opening	36%	36%
Colour	RAL Anodised	Galvanised RAL

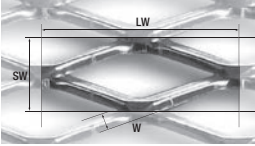


Mesh dimensions
LW = Long diagonal **W** = Width
SW = Short diagonal **t** = Thickness

MOSCOW: dimensions: 28 x 10 - 2 x 1.5 (Scale 1:2)

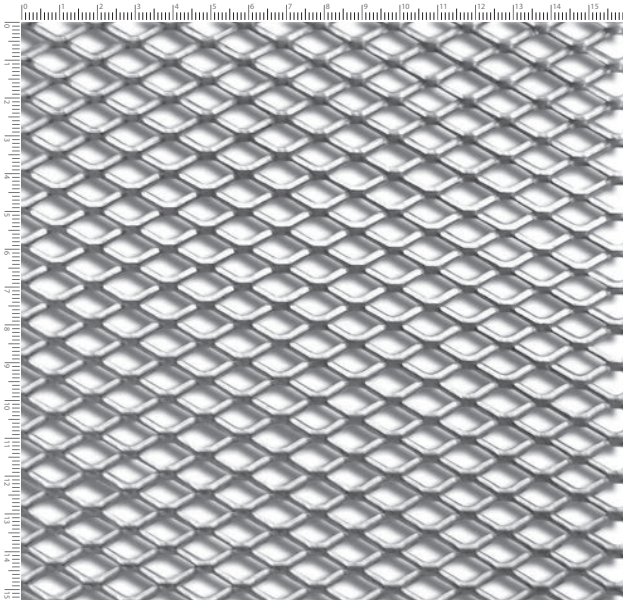


Features	Aluminium	Steel
LW mm	28	28
SW mm	10	10
W mm	2	2
t mm	1.5	1.5
Weight kg/m ²	1.7/2.4	4.2/6.4
% opening	55%	55%
Colour	RAL Anodised	Galvanised RAL

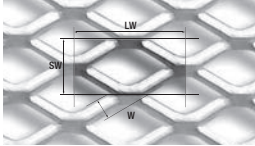


Mesh dimensions
LW = Long diagonal **W** = Width
SW = Short diagonal **t** = Thickness

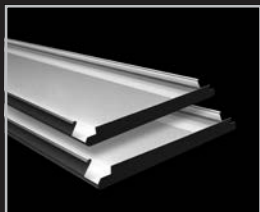
ROTTERDAM: dimensions: 20 x 10 - 2.5 x 1.0 (Scale 1:2)



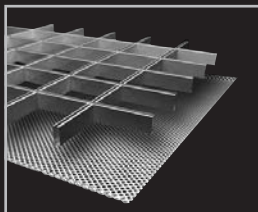
Features	Aluminium	Steel
LW mm	20	20
SW mm	10	10
W mm	2.5	2.5
t mm	1.0	1.0
Weight kg/m ²	2.4	5.4
% opening	50%	50%
Colour	RAL Anodised	Galvanised RAL



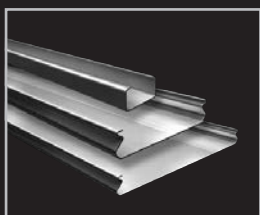
Mesh dimensions
LW = Long diagonal **W** = Width
SW = Short diagonal **t** = Thickness



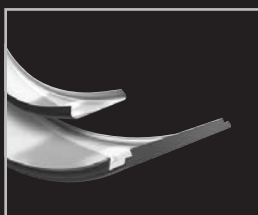
Wide Panel



Cell | Stretch metal



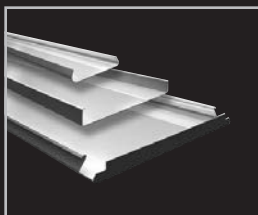
Linear



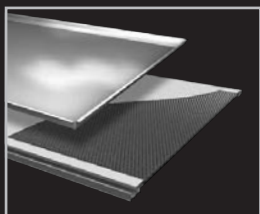
Curved



Screen



Exterior



Tiles | XLnt panel

Belgium
Bulgaria
Croatia / Slovenia
Czech Republic
Denmark
France
Germany
Greece
Hungary
Italy
The Netherlands
Norway
Poland
Portugal
Romania
Russia
Serbia
Slovakia
Spain
Sweden
Switzerland
Turkey
United Kingdom
Africa
Middle East

Asia
Australia
Latin America
North America



Hunter Douglas Architectural

Piekstraat 2
P.O. Box 5072 - 3008 AB Rotterdam
The Netherlands
Tel. +31 (0)10 - 486 99 11
Fax +31 (0)10 - 484 79 10
www.hunterdouglasarchitectural.eu

© Registered trademark - a HunterDouglas® product Pats. & Pats. Pend. -
Technical data subject to change without notice. © Copyright Hunter Douglas 2018.
No rights can be derived from copy, text pertaining to illustrations or samples.
Subject to changes in materials, parts, compositions, designs, versions, colours etc.,
even without notice. MX800S00