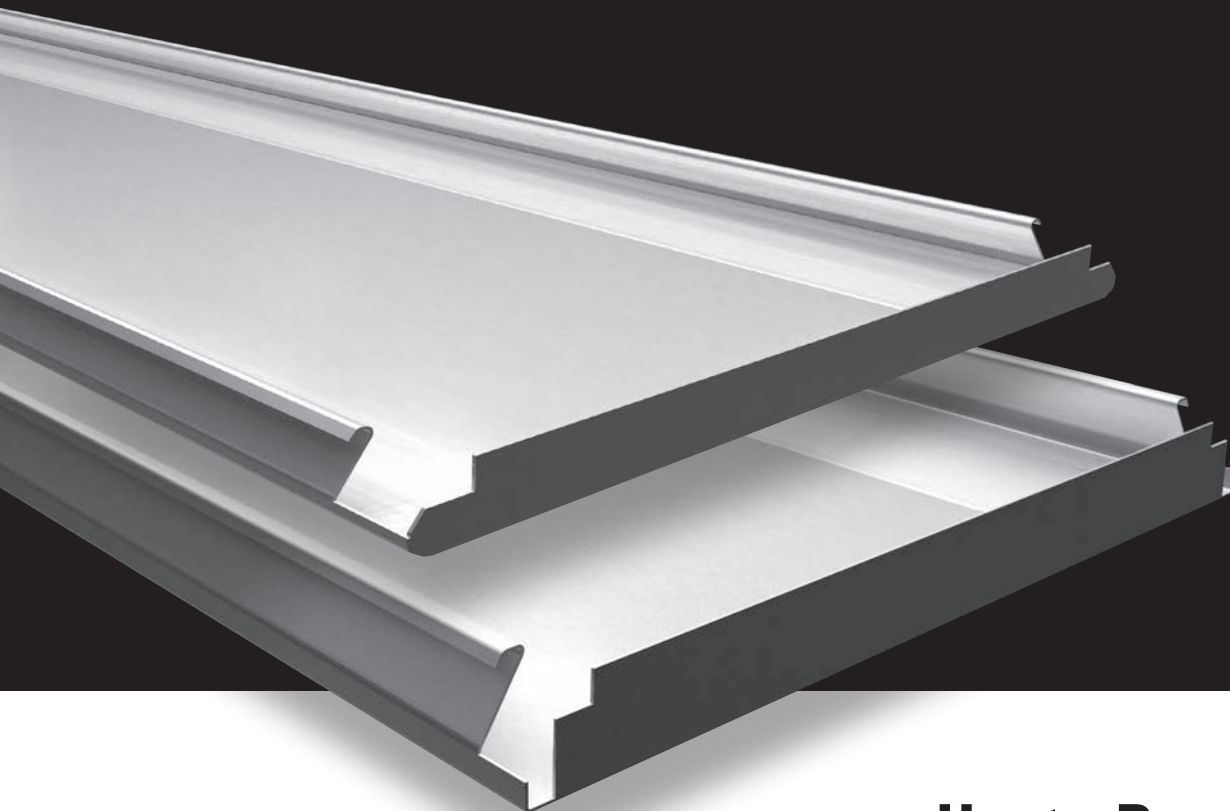


Wide Panel 300C/L Carrier

Hunter Douglas Wide Panel Ceilings enables the architect to design a closed ceiling with high performance aluminium or steel materials. In order to give maximum freedom in design there is a wide choice in panels with soft edges for a monolithic ceiling appearance or panels with square edges which results in a smooth ceiling with a narrow butt joint.



HunterDouglas 
Architectural

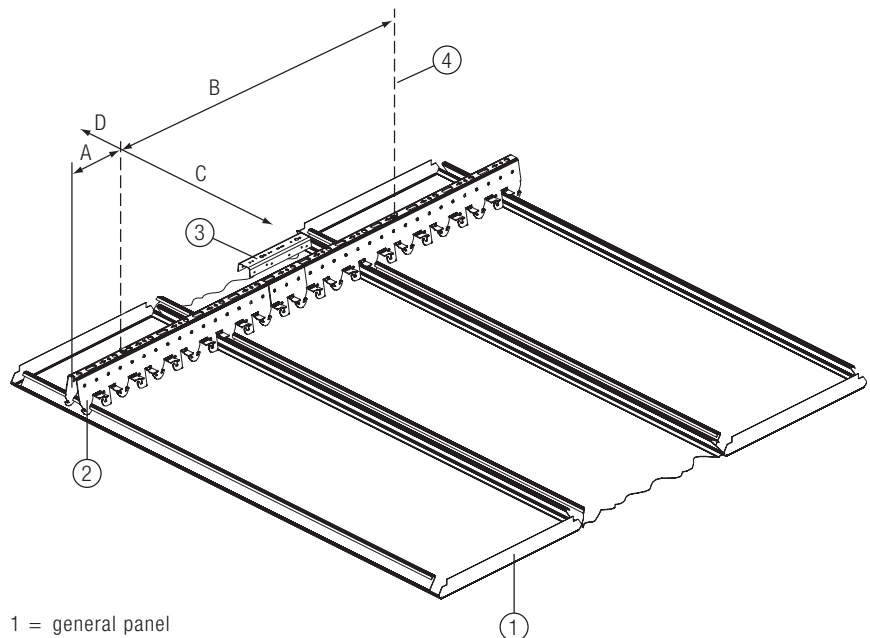
300C/L Carrier

PANELS

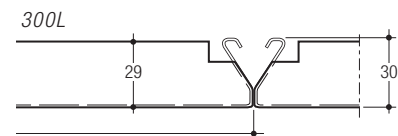
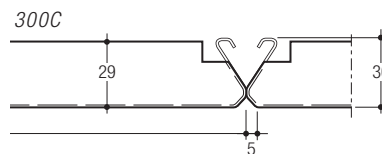
The panels can simply be fixed on the carrier (2) by hanging one side of the panel on the prongs of the carrier and pressing the other side with an upward movement. Integrated locking clips onto the carrier can be used to lock adapter panels. This system is also available for exterior use.

SUSPENSION

The panels are fixed to a carrier which allows for all panels to be removed individually. By keeping simultaneous pressure on the panel edge the panels can be moved down of the carrier.

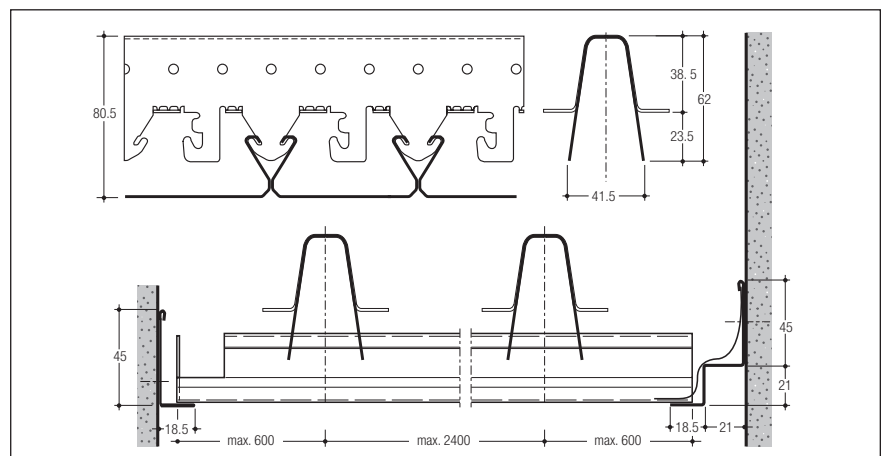


- 1 = general panel
- 2 = carrier
- 3 = carrier splice
- 4 = hanger



CONSTRUCTION DETAILS

A standard range of edge profiles can be used as perimeters.



MAXIMUM SPANS

Panel type	Carrier Span		Panel Span			
	Steel 1.0	Alu 0.95	300C		300L	
	A	B	C	D	C	D
Alu 0.7	300	2000	2400	600	1800	300
Steel 0.6	300	1600	2400	600	1800	300

DIMENSIONS & WEIGHTS

Panels from 250-1000 mm are available on request. Weight based on 2400 mm panels including sub-structure.

Panel	Width	Min. length	Max. length	Weight/m ²
Alu 0.7	300	1000	6000	2.9 kg
Steel 0.6				6.4 kg

MATERIAL REQUIREMENT PER M²

Requirements are based on using panels with a length of 2400 mm.

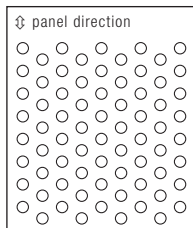
* Depending on steel or alu carrier

	Unit	300C/L Carrier system
Panels	lm	3.33
Carrier	lm	0.42 / 0.56
Carrier splice	pcs	0.08 / 0.11
Suspension	pcs	variable: 0.21 - 0.37*

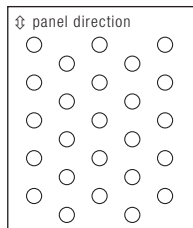
Acoustics

PERFORATION OPTIONS

Panels can be supplied perforated with a \varnothing of 1.5 or 2.0 mm (open area of 23% and 16%). As a standard feature, perforated panels are supplied with a sound absorbing non-woven tissue glued into the panel for enhanced acoustical performance.

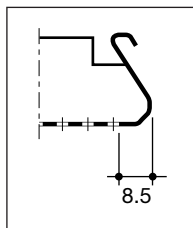


D1523
 \varnothing 1.5 mm
 23% open area
 Δ 3 mm



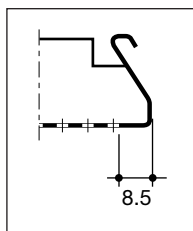
D2016
 \varnothing 2.0 mm
 16% open area
 Δ 5 mm

300C



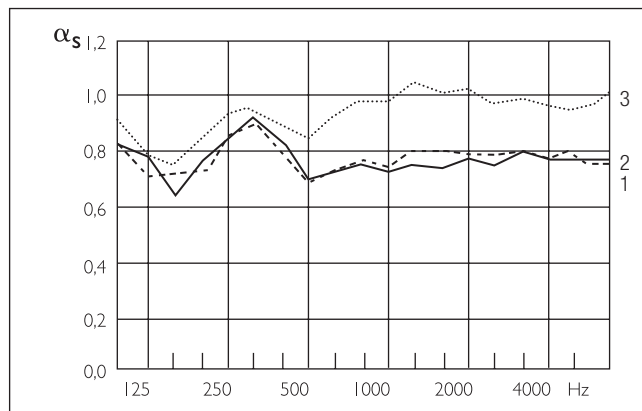
Note: Panels have a nominal plain border of 8.5 mm along the longitudinal panel direction in order to assure maximum flatness and product stability.

300L



Note: Panels have a nominal plain border of 8.5 mm along the longitudinal panel direction in order to assure maximum flatness and product stability.

SOUND ABSORPTION DATA 300C/L



300C/L

α_s = sound absorption degree:
 an absorption of 1.0 indicates a 100% absorption of sound.

- Curve 1 α_s 300C/L

\varnothing 2.0 mm perforated panels, provided with 0.2 mm thick, black non-woven acoustic tissue glued over the whole perforated area. Plenum depth is 400 mm.

- Curve 2 α_s 300C/L

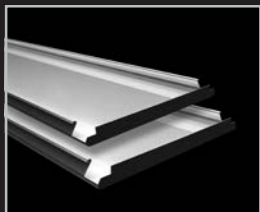
\varnothing 1.5 mm perforated panels, provided with 0.2 mm thick, black non-woven acoustic tissue glued over the whole perforated area. Plenum depth is 400 mm.

- Curve 3 α_s 300C/L

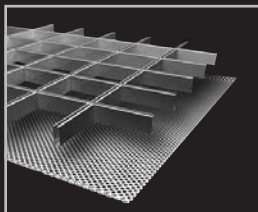
\varnothing 1.5 mm perforated panels, provided with 0.2 mm thick, black non-woven acoustic tissue glued over the whole perforated area plus 25 mm thick mineral wool pad with a density of 16 kg/m³. Plenum depth is 400 mm.

Freq. Hz.	125	250	500	1000	2000	4000	α_w
Curve 1	0.70	0.81	0.69	0.77	0.79	0.79	0.75(L)
Curve 2	0.68	0.83	0.70	0.74	0.76	0.78	0.75(L)
Curve 3	0.79	0.93	0.84	0.99	1.01	0.96	-

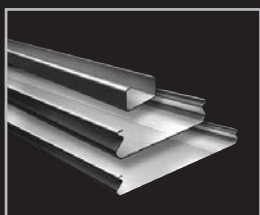
*The 300C Wide Panel ceilings were tested by TNO Delft (The Netherlands), an independent official testing institute. Report no.: TPD-HAG-RPT-94-0037
 300L panel due to shape similar performance as 300C panel.*



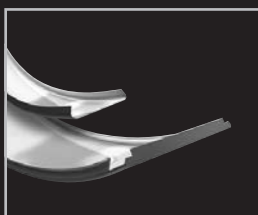
Wide Panel



Cell | Stretch metal



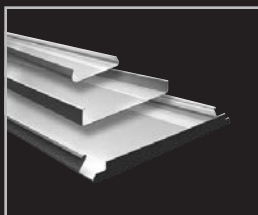
Linear



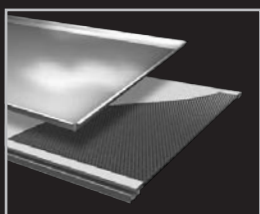
Curved



Screen



Exterior



Tiles | XLnt panel

Belgium

Bulgaria

Croatia / Slovenia

Czech Republic

Denmark

France

Germany

Greece

Hungary

Italy

The Netherlands

Norway

Poland

Portugal

Romania

Russia

Serbia

Slovakia

Spain

Sweden

Switzerland

Turkey

United Kingdom

Africa

Middle East

Asia

Australia

Latin America

North America



Produced by
Hunter Douglas
Ceiling Center



Hunter Douglas Architectural

Piekstraat 2

P.O. Box 5072 - 3008 AB Rotterdam

The Netherlands

Tel. +31 (0)10 - 486 99 11

Fax +31 (0)10 - 484 79 10

www.hunterdouglasarchitectural.eu

© Registered trademark - a HunterDouglas® product Pats. & Pats. Pend. -
Technical data subject to change without notice. © Copyright Hunter Douglas 2018.
No rights can be derived from copy, text pertaining to illustrations or samples.
Subject to changes in materials, parts, compositions, designs, versions, colours etc.,
even without notice. **MX071200**