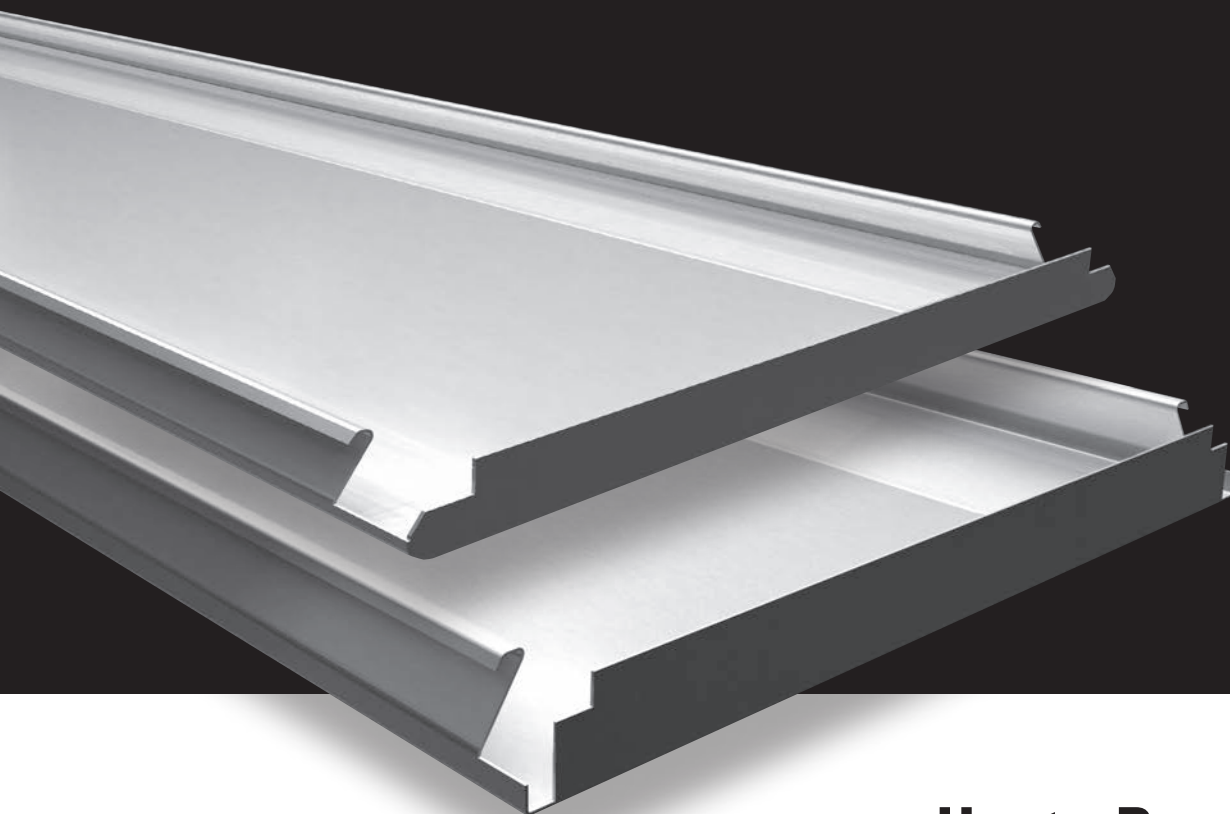


# Wide Panel 300C/L Bandraster

Hunter Douglas Wide Panel Ceilings enables the architect to design a closed ceiling with high performance aluminium or steel materials. In order to give maximum freedom in design there is a wide choice in panels with soft edges for a monolithic ceiling appearance or panels with square edges which results in a smooth ceiling with a narrow butt joint.



**HunterDouglas**   
Architectural

# 300C/L Bandraster

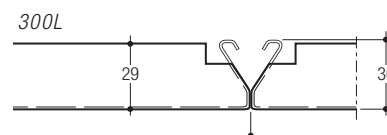
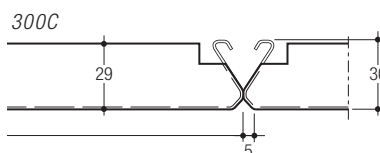
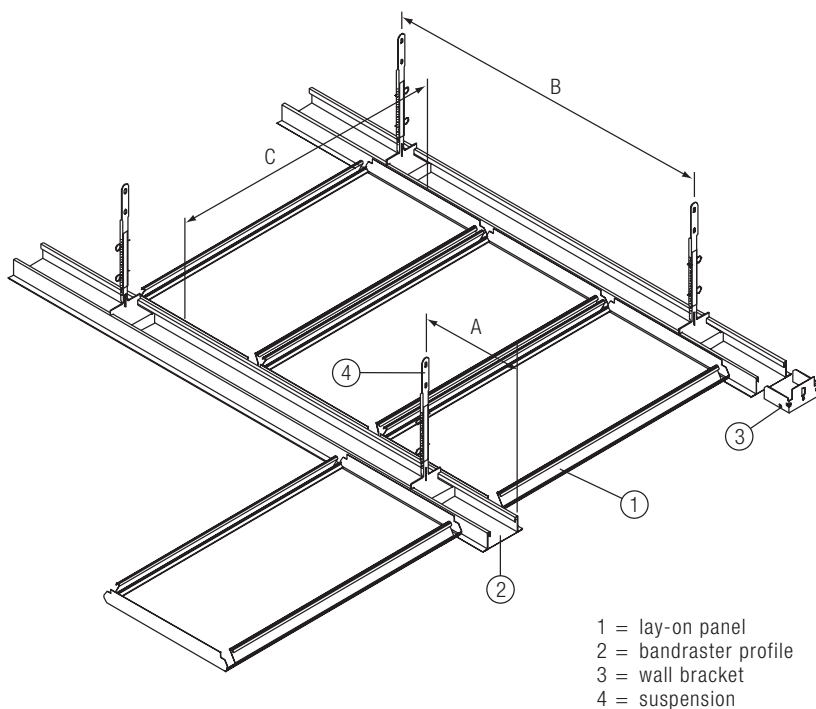
## PANELS

300C/L Lay-on panels (1) designed to be installed on bandraster profiles (2).

## SUSPENSION

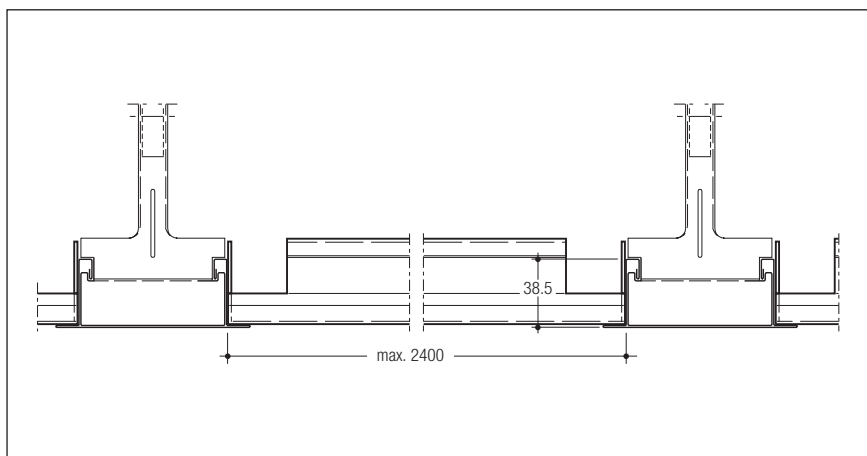
The panels have straight upstands at the panel ends.

When accessing the plenum the panels can be lifted and stacked onto adjacent installed panels to avoid having to lower the panels down to the floor.



## CONSTRUCTION DETAILS

L or W steel edge profiles can be used as perimeters.



## MAXIMUM SPANS

Panel type	Profile Span		Panel Span C
	A	B	
Alu 0.7/Steel 0.6	Non Hunter Douglas	Non Hunter Douglas	2400

## DIMENSIONS & WEIGHTS

Panels from 250-1000 mm are available on request. Weight based on 2400 mm panels including sub-structure.

Panel	Width	Min. length	Max. length	Weight/m <sup>2</sup>
Alu 0.7	300	1000	2400	3.5 kg
Steel 0.6				7.0 kg

## MATERIAL REQUIREMENT PER M<sup>2</sup>

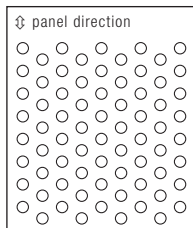
Requirements are based on using panels with a length of 2400 mm.

	Unit	300C/L Bandraster system
Panels	1m	3.33
Bandraster profile (non HD)	1m	0.42

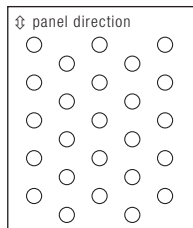
# Acoustics

## PERFORATION OPTIONS

Panels can be supplied perforated with a  $\varnothing$  of 1.5 or 2.0 mm (open area of 23% and 16%). As a standard feature, perforated panels are supplied with a sound absorbing non-woven tissue glued into the panel for enhanced acoustical performance.

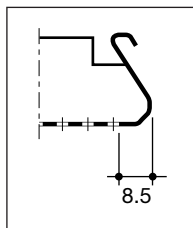


**D1523**  
 $\varnothing$  1.5 mm  
 23% open area  
 $\Delta$  3 mm



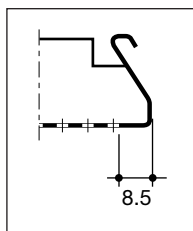
**D2016**  
 $\varnothing$  2.0 mm  
 16% open area  
 $\Delta$  5 mm

## 300C



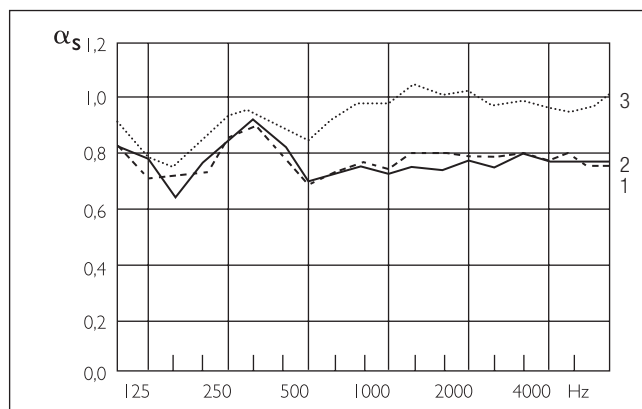
*Note: Panels have a nominal plain border of 8.5 mm along the longitudinal panel direction in order to assure maximum flatness and product stability.*

## 300L



*Note: Panels have a nominal plain border of 8.5 mm along the longitudinal panel direction in order to assure maximum flatness and product stability.*

## SOUND ABSORPTION DATA 300C/L



**300C/L**

$\alpha_s$  = sound absorption degree:

an absorption of 1.0 indicates a 100% absorption of sound.

### - Curve 1 $\alpha_s$ 300C/L

$\varnothing$  2.0 mm perforated panels, provided with 0.2 mm thick, black non-woven acoustic tissue glued over the whole perforated area. Plenum depth is 400 mm.

### - Curve 2 $\alpha_s$ 300C/L

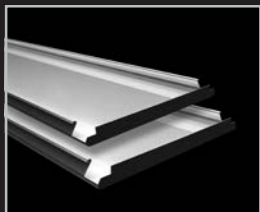
$\varnothing$  1.5 mm perforated panels, provided with 0.2 mm thick, black non-woven acoustic tissue glued over the whole perforated area. Plenum depth is 400 mm.

### - Curve 3 $\alpha_s$ 300C/L

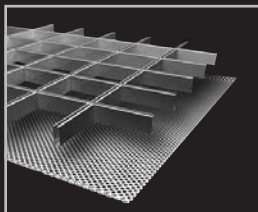
$\varnothing$  1.5 mm perforated panels, provided with 0.2 mm thick, black non-woven acoustic tissue glued over the whole perforated area plus 25 mm thick mineral wool pad with a density of 16 kg/m<sup>3</sup>. Plenum depth is 400 mm.

Freq. Hz.	125	250	500	1000	2000	4000	$\alpha_w$
Curve 1	0.70	0.81	0.69	0.77	0.79	0.79	0.75(L)
Curve 2	0.68	0.83	0.70	0.74	0.76	0.78	0.75(L)
Curve 3	0.79	0.93	0.84	0.99	1.01	0.96	-

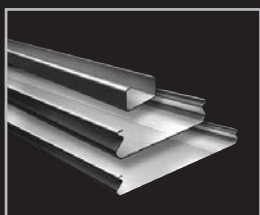
*The 300C Wide Panel ceilings were tested by TNO Delft (The Netherlands), an independent official testing institute. Report no.: TPD-HAG-RPT-94-0037*  
*300L panel due to shape similar performance as 300C panel.*



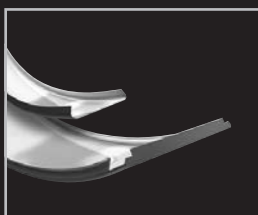
Wide Panel



Cell | Stretch metal



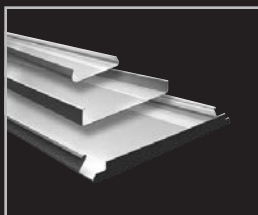
Linear



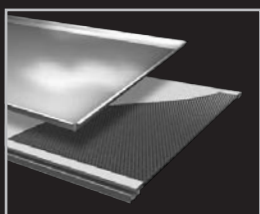
Curved



Screen



Exterior



Tiles | XLnt panel

Belgium  
Bulgaria  
Croatia / Slovenia  
Czech Republic  
Denmark  
France  
Germany  
Greece  
Hungary  
Italy  
The Netherlands  
Norway  
Poland  
Portugal  
Romania  
Russia  
Serbia  
Slovakia  
Spain  
Sweden  
Switzerland  
Turkey  
United Kingdom  
Africa  
Middle East

Asia  
Australia  
Latin America  
North America



Produced by  
Hunter Douglas  
Ceiling Center



### Hunter Douglas Architectural

Piekstraat 2  
P.O. Box 5072 - 3008 AB Rotterdam  
The Netherlands  
Tel. +31 (0)10 - 486 99 11  
Fax +31 (0)10 - 484 79 10  
[www.hunterdouglasarchitectural.eu](http://www.hunterdouglasarchitectural.eu)

© Registered trademark - a HunterDouglas® product Pats. & Pats. Pend. -  
Technical data subject to change without notice. © Copyright Hunter Douglas 2018.  
No rights can be derived from copy, text pertaining to illustrations or samples.  
Subject to changes in materials, parts, compositions, designs, versions, colours etc.,  
even without notice. **MX071200**